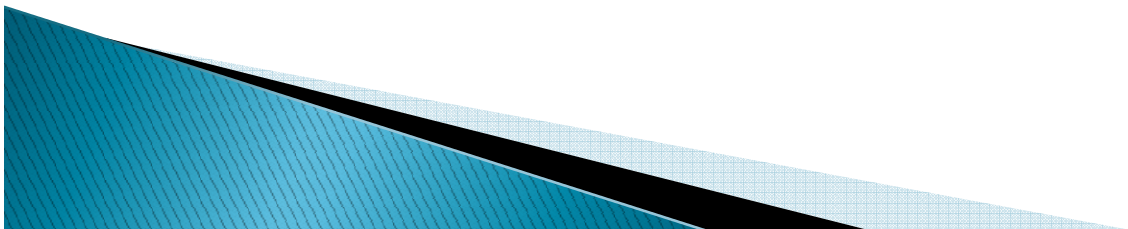


Tulare Lake Basin Disadvantaged Community Water Study

Management and Non-Infrastructure Solutions
Pilot Study

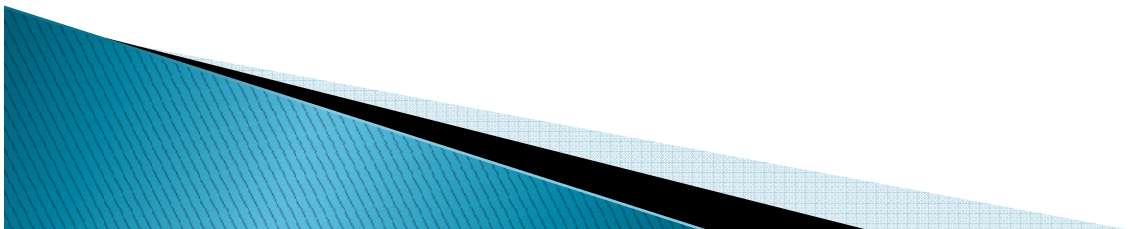
Community Review Focus Area Meeting

June 26, 2013



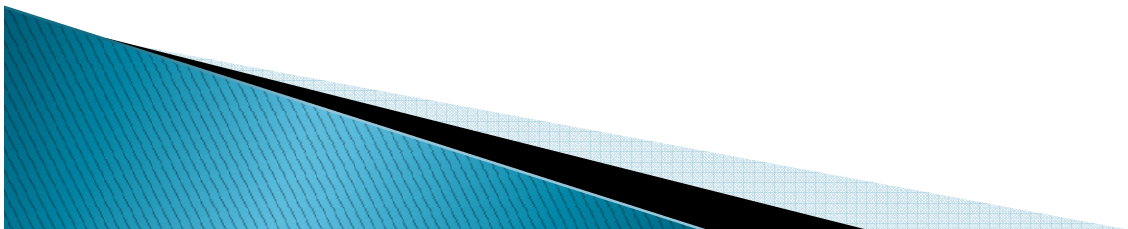
Purpose of Meeting

1. Provide Information – Goals and Objectives of Tulare Lake Basin Study
2. Provide Summary of Shared Solutions
3. Get Input – Water and Wastewater Needs
4. Get Input– Potential to Implement



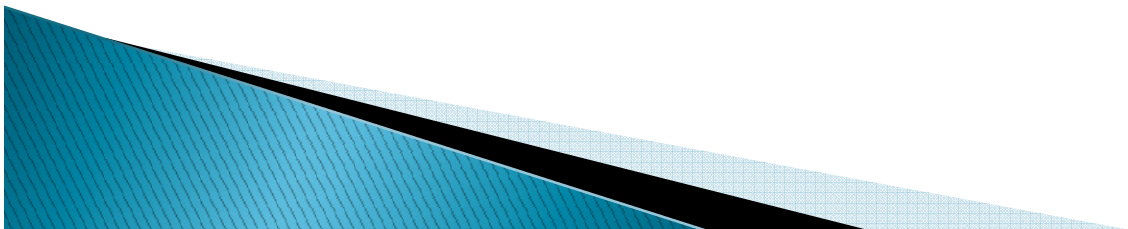
Goals and Objectives

- ❑ Tulare Lake Basin (TLB) Study
 - Evaluate Water and Wastewater Needs of Disadvantaged Communities within the TLB
 - Develop List of Priority Issues and Potential Solutions through a Stakeholder Process
 - Develop a plan that provide DACs safe, clean and affordable potable water supply and effective and affordable wastewater treatment and disposal options (Replicable models for our region and beyond)



Priority Issues and Potential Solutions

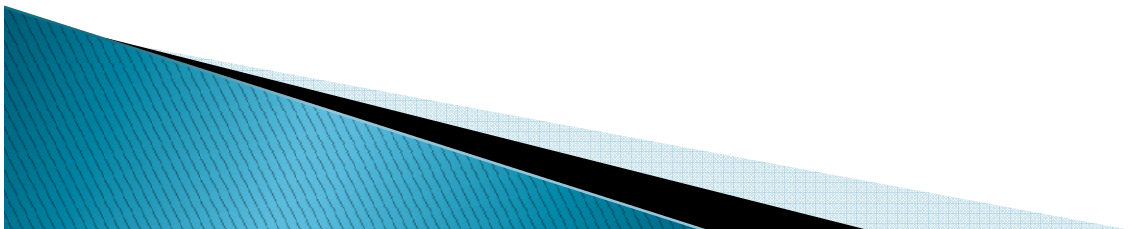
- ❑ Four Pilot Studies Identified
 - **Management and Non-Infrastructure Solutions**
 - New Source Development
 - Technical Solutions
 - Individual Household Solutions



Group Discussion

Local Water/Wastewater Needs

- What are the major drinking water and wastewater needs in your community? Region?
- What are some of the solutions you have implemented?
- Do you think that sharing resources with other water/wastewater systems in the area could benefit your community?
- What types of resources do you think could be shared?



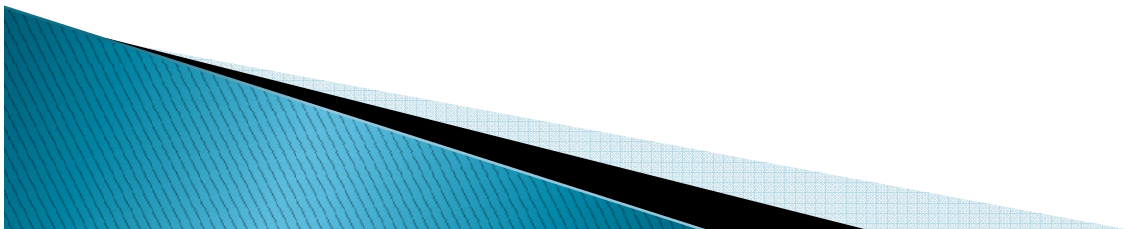
Management and Non-Infrastructure Pilot Project

❑ Description of Problem:

- Lack of funding to offset increasingly expensive Operations & Maintenance Costs in large part due to lack of economies of scale
- Lack of Technical, Managerial, and Financial capacity by water and wastewater providers

❑ Solutions seek to help communities:

- Establish economies of scale without necessarily requiring physical and full consolidation
- Help reduce expenses and improve quality of services



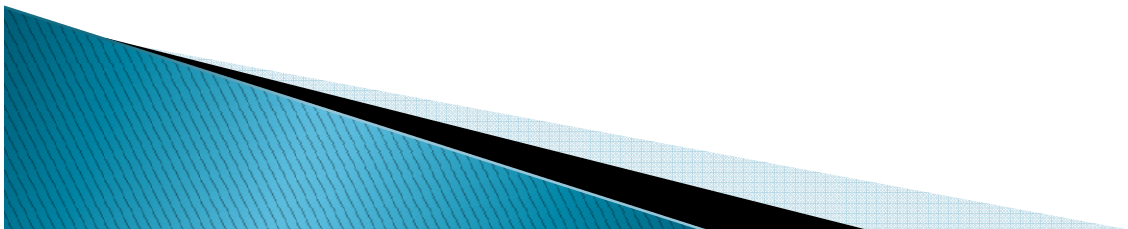
Management and Non-Infrastructure Solutions:

□ Levels of Sharing (see handout)

→ Increasing Transfer of Responsibility →			
Informal Cooperation	Contractual Assistance	Joint Powers Authority	Ownership Transfer
Work with other systems but without contractual obligations	Requires a contract, but contract is under system's control	Creation of a new entity by several systems that continue to exist as independent entities (e.g. regional water system)	Takeover by existing or newly created entity
Examples:	Examples:	Examples:	Examples:
Sharing equipment	Contracting operation and management	Sharing system management	Acquisition and physical interconnection
Sharing bulk supply purchases	Outsourcing engineering services	Sharing operators	Acquisition and satellite management
Mutual aid arrangement	Purchasing water	Sharing source water	One system transferring ownership to another to become a larger existing system or entity

Shared Solutions – Case Studies

- Tipton and Pixley (Informal Cooperation – shared backup operators/resources)
- Earlimart and Richgrove (Contractual Assistance – shared operator)
- Porter Vista and City of Porterville (Contractual Assistance – sewer lift station maintenance, wastewater treatment)
- Fairways Tract and City of Porterville (Full Consolidation – water supply and distribution)



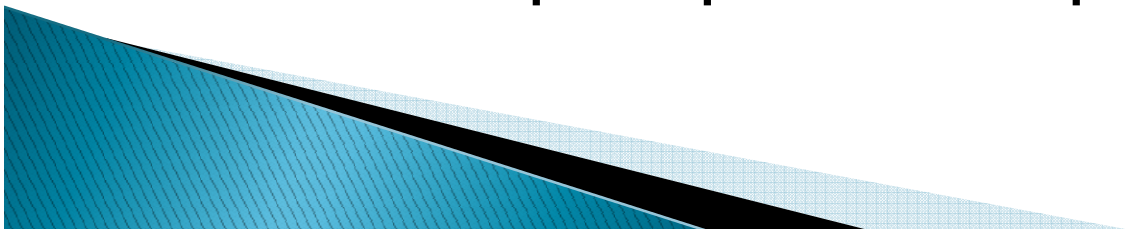
A map of the study area in Thabakana, showing the location of the study area in relation to Avenue 56 and the city of Thabakana. The map includes a scale bar and a north arrow.



Community Review Process

- Purpose/benefits:

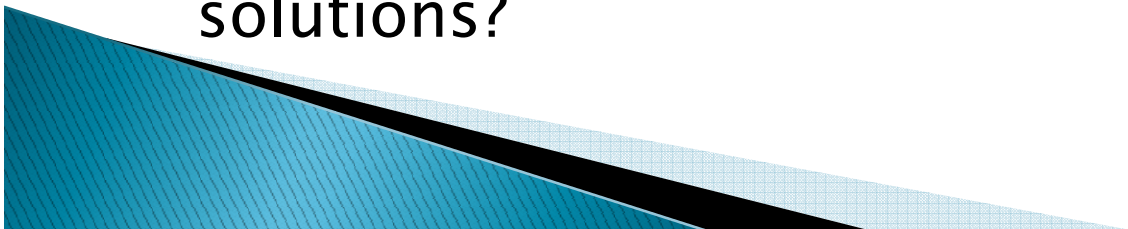
- Opportunity for communities to network
- Identify common needs among communities
- Build momentum for shared solutions and possible partnerships among communities
- Get feedback from communities – are shared solutions presented of interest?
- Get guidance on the development of a roadmap or plan to implement



Group Discussion

Gauging Interest in Shared Solutions

- Are the solutions presented of interest?
- Has your community implemented any type of shared resource solution?
 - What worked well?
 - What did not work well?
- What do you need for these types of solutions to work for you?
- What additional information would be helpful?
- Are you interested in participating in the development of a plan that could be used to guide the implementation of shared resources solutions?



Next Steps

- A second community meeting?
 - Topics of discussion
 - Date at time
 - Location
- Your Feedback is Encouraged!
- We may be contacting you regarding your specific community setting
- We welcome any additional questions and input – email
mmadec@ppeng.com

