

Tribal Engagement Plan for the Tulare-Kern Funding Area

Prepared for:

Tulare-Kern Funding Area
Disadvantaged Community Involvement Program
Project Advisory Committee

Submitted by:

Self-Help Enterprises

August 2020

Prepared by:

Community Engagement and Planning Team
Community Development Department
Self-Help Enterprises
Tribal Engagement Stakeholder Group

1. Background and Objectives

Out of respect to Tribal communities, Self-Help Enterprises (SHE) recognizes the sacred relationship that First Peoples have to water. We want to recognize the beneficial uses of water and cultural practices of Tribes and recognize that Tribes are sovereign nations. We thank everyone for their time and efforts in formulating this Plan to include the needs, values and perspectives of Tribes in regional water management in the Tulare Lake Basin.

The purpose of the Tribal Engagement Plan for the Tulare-Kern Funding Area (TKFA) is to provide awareness and education to Tribes regarding the Integrated Regional Water Management (IRWM) Program and the Disadvantaged Community Involvement Program (DACIP). Goals of the plan include identifying the best outreach and engagement practices for Tribes and identifying and prioritizing projects with Tribes that could benefit from IRWM funding. Additionally, the development of the Tribal Engagement Plan helps ensure that the statewide and regional priorities for the IRWM Program and the TKFA are met and that meaningful engagement and outreach with Tribes is done within the Funding Area and individual IRWM regions.

1.1 Grant Background

On November 4, 2014, California voters approved Proposition 1, the Water Quality, Supply, and Infrastructure Improvement Act. Proposition 1 authorized \$510 million in IRWM grant funding to twelve Funding Areas, allocating 10% (\$51M) of the funds be used for “ensuring involvement of disadvantaged communities, economically distressed areas [EDAs], or underrepresented communities within regions” and not less than 10% (another \$51 million) be “allocated to projects that directly benefit disadvantaged communities.” The Department of Water Resources (DWR) subsequently established the DACIP and awarded nearly \$52 million to the twelve Funding Areas in California. The objectives of the IRWM Program are to ensure the involvement of Disadvantaged Communities, EDAs and underrepresented communities (e.g., Tribes) in IRWM planning efforts in the 48 established regions in the State; to survey and document the needs of these communities in Needs Assessment Reports; and to develop strategies for addressing the needs (including projects that could be eligible for Proposition 1 IRWM Implementation funding).

The Tulare-Kern Funding Area Disadvantaged Community Involvement Program (TKFA DACIP) is a \$3.4 million grant-funded effort, which aims to develop strategies to address long-term, sustainable water planning needs, and improve the participation and engagement of Disadvantaged Communities (DACs) and Severely Disadvantaged Communities (SDACs) in IRWMs within the funding area. Specifically, \$550,000 of the available \$3.4 million has been set aside to fund a Disadvantaged Community Engagement and Education Program (DACEEP). The DACEEP focuses on improving the understanding of community water needs and the IRWM process as well as encouraging DAC/SDAC participation and engagement in IRWM activities.

2. Tribes

The IRWM Grant Program identifies federally recognized Tribes and California Native American Tribes listed on the Native American Heritage Commission's Tribal Consultation list, as eligible grant applicants who may access IRWM grant funding. Based on the 2019 IRWM Grant Program Guidelines, a California Native American Tribe includes all Indigenous Communities of California that are on the contact list maintained by the Native American Heritage Commission. Tribes on this list include those that are federally non-recognized, federally recognized, and those with Tribal lands, regardless of whether they own those lands. Figure 1 displays a California Tribal Lands Map as developed and identified by DWR.

Based on Figure 1, the following California Tribal Lands are located within the TKFA: Santa Rosa Indian Community of the Santa Rosa Rancheria, Strathmore Rancheria, Tule River Indian Tribe, Squaw Valley Rancheria, and Cold Spring Rancheria of Mono Indians. Specifically, the Cold Springs Rancheria of Mono Indians, Squaw Valley Rancheria, and the Tule River Indian Tribe are located within the Southern Sierra IRWM region; Strathmore Rancheria was located within the Kaweah River Basin; and the Santa Rosa Indian Community of the Santa Rosa Rancheria is located within a white area¹. Although a Tribe is located within a white area, depending on the IRWM group, a Tribe may request to become part of an IRWM region and have the IRWM region extend their boundaries to ensure they are eligible for grant funding. Tribes listed on Figure 1, include those listed by the NAHC at the time that the map was developed and may not include or be representative of all Tribes located in the region.

Additionally, Figure 2 augments DWR's map and presents a comprehensive list of Tribes that were identified to be within the TKFA and includes their respective IRWM group based on the information provided by the Native American Heritage Commission. To obtain contact information for each of the Tribes below or a specific region, please contact the [California Native American Heritage Commission](#). The [Tribal Leaders Directory](#), maintained by the U.S. Department of the Interior, also provides contact information for each federally recognized Tribe.

Due to little to no participation from Tribes in the Funding Area in prior funding opportunities, the TKFA identified the need to expand outreach and engagement efforts to Native American Tribal communities within the Funding Area to provide awareness and education about the IRWM Program and DAC Involvement Program to Tribal nations and Tribal leaders. Figure 1 and Figure 2 include all Tribes that we have become aware of based on the resources we have encountered; however, we recognize that the Tribes listed in these figures may not include all Tribes within the region. As additional Tribal communities are brought to the attention of the TKFA, it is proposed that they will be added to this Plan.

For Tribes that are interested in contacting their respective IRWM region and requesting Technical Assistance please refer to the Tribal IRWM Factsheet located in [Appendix A](#).

¹ A white area refers to as an area that is not part of an IRWM group; however, they are still within the boundaries of the Funding Area

Funding Areas | IRWM Regions | California Tribal Lands



Tribe	IRWM Group
Chumash Council of Bakersfield	Kern IRWM
Kern Valley Indian Community	Kern IRWM
Kitanemuk & Yowlumne Tejon Indians	Kern IRWM
Tejon Indian Tribe	Kern IRWM
Tubatulabals of Kern Valley	Kern IRWM
Dumna Wo-Wah Tribal Government	Kings Basin Water Authority IRWM
Kings River Choinumni Farm Tribe	Kings Basin Water Authority IRWM
Traditional Choinumni Tribe	Kings Basin Water Authority IRWM
Cold Springs Rancheria	Southern Sierra IRWM
Dunlap Band of Mono Indians	Southern Sierra IRWM
Tule River Indian Tribe	Tule River Basin IRWM
Santa Rosa Rancheria Tachi Yokut Tribe	White Area (between Kings Basin Water Authority IRWM, Westside San Joaquin IRWM and Kaweah River IRWM)
North Fork Mono Tribe	White Area (between Southern Sierra IRWM and Kings Basin Water Authority IRWM)

Figure 2

3. Sources for this Plan

Data, recommendations and other information gathered for this plan were made possible by the contributions of the stakeholder group, and with Self-Help Enterprises staff attending webinars to further staffs' understanding on Tribal engagement and outreach efforts. Information generated from each of these sources is further detailed in the sub-sections below.

3.1.1 Stakeholder Group

To develop the Tribal Engagement Plan, a stakeholder group was formed. The stakeholder group was comprised of relevant stakeholders in the TKFA such as Tribal Representatives, relevant IRWM Group Representatives, the County of Tulare and members of the DWR Office of the Tribal Policy Advisory. Outreach was conducted to reach out to Tribes and other stakeholders to invite them to participate in the group and to assist in the development of this plan. Two meetings were held with this group to ensure that Tribal voices and needs were being incorporated into this plan, as well as allow the group the opportunity to review and provide feedback on the plan. From these contacts, projects, recommendations and challenges were identified and incorporated into the plan. Additional information regarding the formation of this group and meeting discussions are listed in the subsections below.

3.1.1.1 Outreach

To obtain contact information on Tribes within the TKFA, Self-Help Enterprises (SHE) staff contacted the [California Native American Heritage Commission](#) (NAHC) to request a Local Government Tribal Consultation list. Approval to outreach and contact the Tribes on the list was granted by the NAHC. Please refer to [Appendix B](#) for the contact letter received from the NAHC. From the list received, each of the contacts' addresses was searched using the [DWR DAC Mapping Tool](#), to verify if their address coincided with the TKFA boundaries and IRWM regions. Addresses that coincided within the TKFA were contacted to invite the representative to become part of the Stakeholder group.

Due to COVID-19 and the statewide shelter-in-place that was enforced during the development of this plan and stakeholder group, outreach methods were modified and limited to ensure the safety and health of Tribes and staff. For these reasons, attending in-person meetings, posting flyers, and visiting communities were not included in our outreach methods. Outreach was narrowed down to email communications and phone calls in order to invite stakeholders to become part of the group. Of the 13 Tribes contacted, 4 tribes responded with an interest in being involved in these efforts and joining the group. Based on the Tribes that expressed interest, the IRWM representative for their respective Regional Water Management Group (RWMG) were invited to participate in the stakeholder groups meeting as well. In addition to the Tribes and IRWM representatives, the County of Tulare and the Tribal Liaison for DWR were invited to participate.

3.1.1.2 Stakeholder Meeting

It is recognized that due to the pandemic, there are limited resources, staff and access to the internet that Tribes may have encountered that could have been obstacles to participation. A virtual meeting was held on June 16, 2020 via Zoom, with the goal to provide information on the IRWM Program, DACI Program and DACEEP, identify outreach methods, identify challenges, and identify Tribal projects that could benefit from IRWM funding. Discussions held during the initial meeting were incorporated into this plan as part of the recommendations and challenges. The agenda, discussion questions, PowerPoint, and meeting summary for this initial meeting can be found in [Appendix C](#) through [Appendix F](#). For the interested members who were unable to join the meeting, a follow-up email was sent with the meeting summary and an opportunity to provide written feedback on some the discussions questions. A similar email was sent to contacts who did not respond in order to allow everyone the opportunity to participate and share their input. No written responses were received.

Additionally, SHE staff conducted follow-up calls to Tribes who had expressed interest but were unable to join. Through these calls, the Dumna Wo-Wah Tribal Government and a member who works closely with the Tejon Indian Tribe, shared their input on the discussion questions and their feedback were incorporated into this plan.

A second virtual meeting was held on July 14, 2020 via Zoom, with the goal to review the DACIP and DACEEP, and obtain feedback from the group on the Tribal Engagement Plan. Recommendations and feedback received from the meeting were incorporated into the plan. The draft plan was sent to stakeholders ahead of the meeting for their review. The agenda, discussion questions, PowerPoint, and meeting summary for this meeting can be found in [Appendix G](#) through [Appendix J](#). For the interested members who were unable to join the meeting, a follow-up email was sent with the meeting summary.

3.1.2 Webinars

In addition to the Stakeholder group, SHE staff attended webinars to further staffs' understanding on Tribal engagement and outreach efforts. These webinars included the Tribal Regional Water Management Webinar Series hosted by DWR and the Online Environmental Engagement Conference hosted by California Natural Resources Agency and CalEPA.

The Tribal Regional Water Management Webinar Series hosted by DWR, was a three-part series that discussed IRWM project funding and technical assistance opportunities for Tribes, identified ways to improve and strengthen regional water funding coordination, identified regional needs and reviewing needs assessment, and discussed effective Tribal guidance in the IRWM process. Specifically, part two of the series, focused on discussing successes and challenges that Tribes have experienced in IRWM and considering methods to improve opportunities for Tribes. Based on the conversations and discussions held during the three-part series, some of the relevant information was incorporated into the plan. The flyer to this webinar is located in [Appendix K. DWR's Office of the Tribal Policy Advisor](#) is also a valuable resource, as it is the central point of coordinated communication and consultation with California Native American tribes and DWR to ensure proactive and meaningful consultation.

The Online Environmental Engagement Conference hosted by California Natural Resources Agency and CalEPA was a 2-day conference that consisted of online sessions on community engagement and equity during the COVID-19 crisis. Based on the conversations and discussions on effective and equitable engagement, these methods and ideas were also incorporated into the plan. The meeting materials for this conference are in [Appendix L](#) and the flyer are in [Appendix M](#).

4. Challenges

Based on the information and discussions from the sources discussed in Section 3, the following challenges were identified:

- **COVID-19** – Due to the pandemic, social distancing, and shelter-in-place, some Tribes have postponed on having any Tribal Council meetings.
- **Staff Capacity** – Some Tribes are understaffed and overworked. Some are so busy with projects that they are not able to respond. For some Tribes, when elections happen, there follows a turnover in staff, which can make it hard to identify the right person to contact for outreach and follow-up.
- **Tribal Land** – There are some Tribes that do not have an interest in water management or project development. If Tribes have an interest in projects, sometimes their ability to develop and implement water projects may be limited due to staff capacity and funding.

It is important to note that although these challenges were identified, every Tribe may experience different challenges. To best support Tribes, it is crucial to build relationships with Tribal leaders and decision-makers, and to understand their needs and interests.

5. Recommendations

Based on the information, discussions and challenges identified, the following recommendations were developed to assist in performing better outreach and engagement with Tribes:

- **Build Relationships** – Get to know the Tribe, the people and their needs. Solicit the Tribe’s input prior to initiating development of a project on their property or near their land, or one that would theoretically benefit a Tribe or its members. Through the engagement process, some Tribes have requested that stakeholders be transparent through open communication and incorporating the Tribes input.
- **Attend Tribal Council Meetings** – Some Tribes have a preference to have someone attend their meetings to get to know them. Before attending a council meeting, it is important to ask for permission to attend a meeting by contacting the Tribe. Contact information may be obtained through the [NAHC](#) or the [Tribal Leaders Directory](#).
- **Attend ongoing U.S. Forest Service Meetings** – The U.S. Forest Service hosts meetings for the Sierra National Forest and the Sequoia Forest Service that are in coordination with Tribes. Sharing information during these meetings could be beneficial to getting information to Tribes.
- **Provide Technical Assistance** – Providing Tribes with technical assistance would be helpful. For example, conducting educational webinars/workshops on the IRWM program, and/or providing direct assistance to develop projects
- **Develop Educational Materials** – Materials describing IRWM, local efforts, and local contacts are helpful to share with Tribal members, including case studies with Tribal projects that have been previously funded across California.
- **Continue Engaging and Communicating with Tribes** – Some Tribes have limited resources to attend and participate, but it is recommended to continue engaging with them and keeping them informed. This includes sending emails and making phone calls, if they have expressed interest.
- **Respect a Tribe’s Interest and Decision** – Some Tribes may not be interested in water management programs, and may view IRWM as something that does not pertain to them, as they do not have projects to fund. If a Tribe declines to participate, it is important to respect their decision. However, please keep them updated with information as some Tribes may have ancestral lands within project areas or regions that are important to Tribes.
- **Fund more DAC, SDAC and Tribal projects** --Besides the direct benefits to communities who have projects funded, every successful IRWM project will engender additional interest and motivation to participate in the program.

Where appropriate, some of these recommendations will be accomplished through the DACEEP. Additionally, although some focus group participants mentioned not having projects ready for proposals, they were open to looking into projects and cooperating with other Tribes to advance their projects. Others identified categories of projects for which it may be helpful for Tribes to receive funding; these included:

- Wastewater Collection and Treatment
- Recharge basins to replenish groundwater supplies and improve reliability of domestic wells.
- Individual septic tank system improvement, replacement, or repair

6. Outreach and Engagement Strategies

The TKFA identified the need to expand outreach and engagement efforts to Native American Tribal communities within the Funding Area to provide awareness and education about the IRWM Program and DAC Involvement Program to Tribal communities and Tribal leaders. Goals of the plan include identifying the best outreach and engagement practices for Tribes and identifying projects that could benefit from the IRWM funding. With the challenges and recommendations identified in this plan, the following outreach and engagement strategies will be implemented in the upcoming task of conducting Tribal Consultations with Tribes within the TKFA:

- a. Continue to update and maintain a contact list of Tribal representatives
- b. Continue to work with and update the stakeholder group for the TKFA, as needed
- c. Develop educational materials
- d. Develop case studies on Tribal projects that have been previously funded by IRWM
- e. Attend relevant Tribal meetings to learn more about the Tribes in the TKFA
- f. Attend ongoing meeting with the U.S. Forest Service that are held in coordination with the Tribes
- g. Present further information about the IRWM and DAC Involvement Program at Tribal meetings
- h. Assist Tribes with getting projects on project lists

Some additional next steps include preparing materials for meetings, conducting virtual meetings with Tribes, and preparing and submitting a Tribal Engagement summary report to the Tulare-Kern Funding Area, Project Advisory Committee.

7. Appendices

Proposition 1 Integrated Regional Water Management (IRWM) Tulare-Kern Funding Area (TKFA) Tribal Factsheet

IRWM Program Overview

The Integrated Regional Water Management (IRWM) program was established in 2002 as a statewide voluntary water planning program to encourage regional collaboration among multiple local agencies. The program is managed by the Department of Water Resources (DWR) and offers grant funding to IRWM groups for water-related projects. These projects can include those that support regional water management planning and implementation, increase of water supply and reliability, or protection or improvements to water quality.

Why Is This Important?

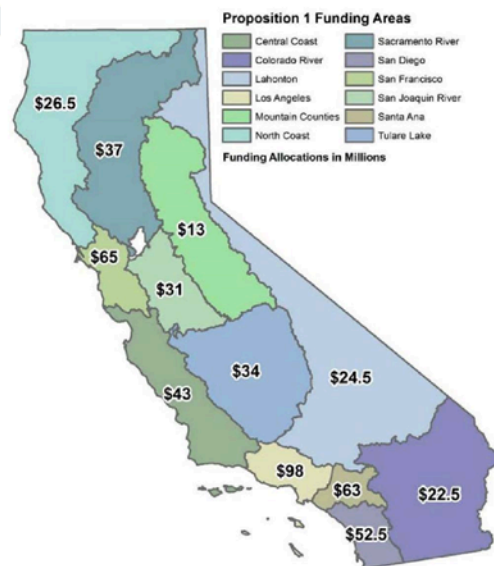
IRWM creates a unique opportunity for local and regional agencies, as well as Tribes, to come together to implement new and effective water management efforts. Tribes that are proactively planning and investing in water management strategies have shown resilience and are able to minimize future vulnerabilities. Tribes should participate to:

- **Identify Water-Related Challenges and Needs:** Tribes can share important information about their water needs and insight to help set goals and priorities for the region, which can lead to better water management decisions and projects on their lands or ancestral lands.
- **Obtain funding:** Tribes may submit projects through the IRWM program to obtain funding to address current critical water needs, promote water conservation, improve water quality, and/or build resiliency. Tribes may also have the opportunity to review and rank projects proposed by other water users (referred to as stakeholders).
- **Improve Water Supply & Sustainability:** Management of the groundwater is critical to protecting the local water supply and preparing for future droughts. Tribes who are involved in the IRWM program, may provide feedback on actions and projects that may benefit their region, while also sustaining and strengthening the IRWM goals.

Available Grant Funds

Over \$1.5 billion in voter-approved State bonds have been provided to the Integrated Regional Water Management Program since it began in 2002. The most recent voter approved bond, Proposition 1 (Prop 1), provided \$510 million for DWR to award IRWM grants to 12 Funding Areas in California.

At least 10% of the funds (\$51 million) will be reserved for projects **that directly benefit Disadvantaged Communities (DACs), including Tribes**, with the minimum 10% requirement applied to each Funding Area. Each Funding Area will then have funds available through two (2) funding categories: 1) General Implementation Projects and 2) DAC Implementation Projects. Tribes and disadvantaged communities can request funds from either category.



Available Funds in the TKFA

DWR will release Prop 1 funding in two solicitation rounds. The first solicitation round occurred in 2019 and the second round is forthcoming. Each round will have a limited amount of funding available. Round 1 was released in 2019, where the TKFA had \$11.5 million available for general implementation projects and \$1.2 million available for DAC Round 1 implementation projects. All projects (DAC and Non-DAC) that applied for funding in Round 1 were presented to DWR during a pre-application workshop on April 24, 2019. Final funding awards for Round 1 for the TKFA can be found here: https://bit.ly/TKFA_Round1

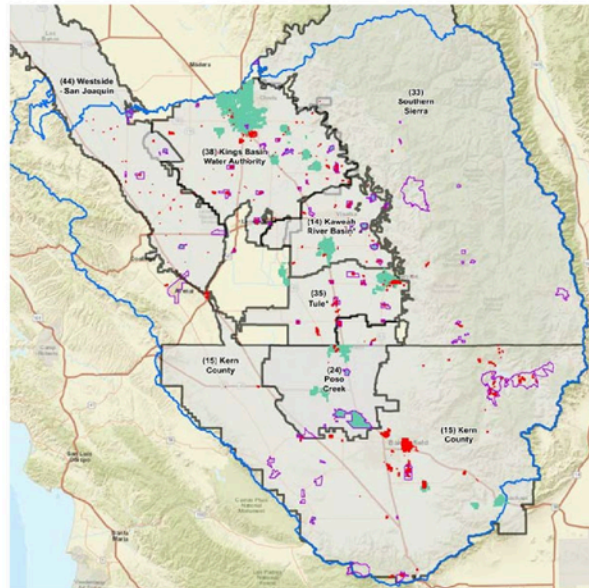
Round 2 is expected to be announced near the end of 2020 or beginning of 2021. The TKFA will have the remaining funds of \$11.5 million available for general implementation projects available and \$2.2 million available for DAC implementation projects.

Tulare-Kern Funding Area

The Tulare-Kern Funding Area encompasses most of Fresno, Kern, Kings and Tulare Counties. There are seven IRWM groups within the Tulare-Kern Funding Area that have chosen to participate in the DACI Program.

The seven (7) IRWM Groups are:

- Kaweah River Basin IRWM Agency
- Kern County IRWM Agency
- Kings Basin Water Authority
- Poso Creek IRWM Agency
- Southern Sierra IRWM Agency
- Tule River Basin IRWM Agency
- Westside-San Joaquin IRWM Agency



How are Tribes identified in IRWM?

The IRWM Grant Program identifies federally recognized Indian Tribes and State Indian Tribes listed on the Native American Heritage Commission's Tribal Consultation list, as eligible grant applicants who may access IRWM grant funding. Based on the 2019 IRWM Guidelines, a California Native American Tribe includes all Indigenous Communities of California that are on the contact list maintained by the Native American Heritage Commission. Tribes on this list include those that are federally non-recognized, federally recognized, and those with allotments lands, regardless of whether they own those lands. The map on page 5 displays a California Tribal Lands Map as developed and identified by DWR.

Additionally, the chart on the next page augments DWR's map and presents a comprehensive list of Tribes that were identified to be within the TKFA and includes their respective IRWM group based on the information provided by the Native American Heritage Commission. A white area refers to as an area that is not part of an IRWM group; however, they are still within the boundaries of the Funding Area. Although a Tribe is located within a white area, depending on the IRWM group, a Tribe may request to become part of an IRWM region and have the IRWM region extend their boundaries to ensure they are eligible for grant funding.

Tribes located within the TKFA

Tribe	IRWM Group
Chumash Council of Bakersfield	Kern IRWM
Kern Valley Indian Community	Kern IRWM
Kitanemuk & Yowlumne Tejon Indians	Kern IRWM
Tejon Indian Tribe	Kern IRWM
Tubatulabals of Kern Valley	Kern IRWM
Dumna Wo-Wah Tribal Government	Kings Basin Water Authority IRWM
Kings River Choinumni Farm Tribe	Kings Basin Water Authority IRWM
Traditional Choinumni Tribe	Kings Basin Water Authority IRWM
Cold Springs Rancheria	Southern Sierra IRWM
Dunlap Band of Mono Indians	Southern Sierra IRWM
Tule River Indian Tribe	Tule River Basin IRWM
Santa Rosa Rancheria Tachi Yokut Tribe	White Area (between Kings Basin Water Authority IRWM, Westside San Joaquin IRWM and Kaweah River IRWM)
North Fork Mono Tribe	White Area (between Southern Sierra IRWM and Kings Basin Water Authority IRWM)

Chart was developed with contact information obtained from the Native American Heritage Commission

Eligible Projects & Priorities

Projects can include, but are not limited to, groundwater storage, improvement of water quality, sanitary systems, water conservation, and storm water resources management.

Priority will be given to projects that advance the IRWM goals: enhance water supply and reliability, protect or improve water quality, and those that address the Human Right to Water and climate and drought preparedness.

DWR will not knowingly disclose information related to Native American cultural sites or sacred places per Government Code section 6254(r). There is no requirement to disclose any information related to Native American cultural sites or sacred places to DWR in the project application.

How to Request Funding for Projects

To be eligible to request funds, participate in the IRWM program. You can follow these steps to get started:

1. Contact your local IRWM Group
2. Understand their project submission process
3. Complete necessary forms to submit project
4. Submit and get the project on the IRWM project list
5. As funding becomes available, update your project

How to Participate in IRWM

You can also stay involved and participate in various other ways, such as:

1. Obtain more information by visiting your IRWM group's website
2. Sign up to get updates
3. Attend a public meeting
4. Join your IRWM Group

IRWM Contacts

Kaweah River Basin IRWM

Shane Smith
ssmith@kdwcd.com
(559) 747-5601x135

Kern County IRWM

Jeff Eklund
jeklund@ppeng.com
(661) 616-5900

Kings Basin Water Authority IRWM

Soua Lee
slee@krwd.org
(559) 237-5567x115

Poso Creek IRWM

Sam Schafer
sschaefer@geiconsultants.com
(805) 729-4677

Southern Sierra IRWM

Bobby Kamansky
southernsierrairwmp@gmail.com
(559) 287-3311

Tule River Basin IRWM

David DeGroot
davidd@4creeks.com
(559) 802-3052

Westside San Joaquin IRWM

Scott Petersen
scott.petersen@sldmwa.org
(209) 826-9696

Provost & Pritchard Consulting Group

Maija Madec
mmadec@ppeng.com
(559) 326-1100

County of Tulare/PAC

Denise England
dengland@co.tulare.ca.us
(559) 636-5027

Available Technical Assistance

Self-Help Enterprises, a non-profit community development organization, is available to assist Tribes with requesting project development funding. Assistance is available to:

- Identify Projects and/or Project Development Needs
- Complete other IRWM Project Forms
- Complete Project Development Application Forms
- Assist DACs get Projects on an IRWM Project List

For questions or assistance, contact:

Sonia Sanchez

Senior Community Development Specialist
SoniaS@selfhelpenterprises.org or (559) 802-1689

Additional Resources

CA Office of the Tribal Advisor

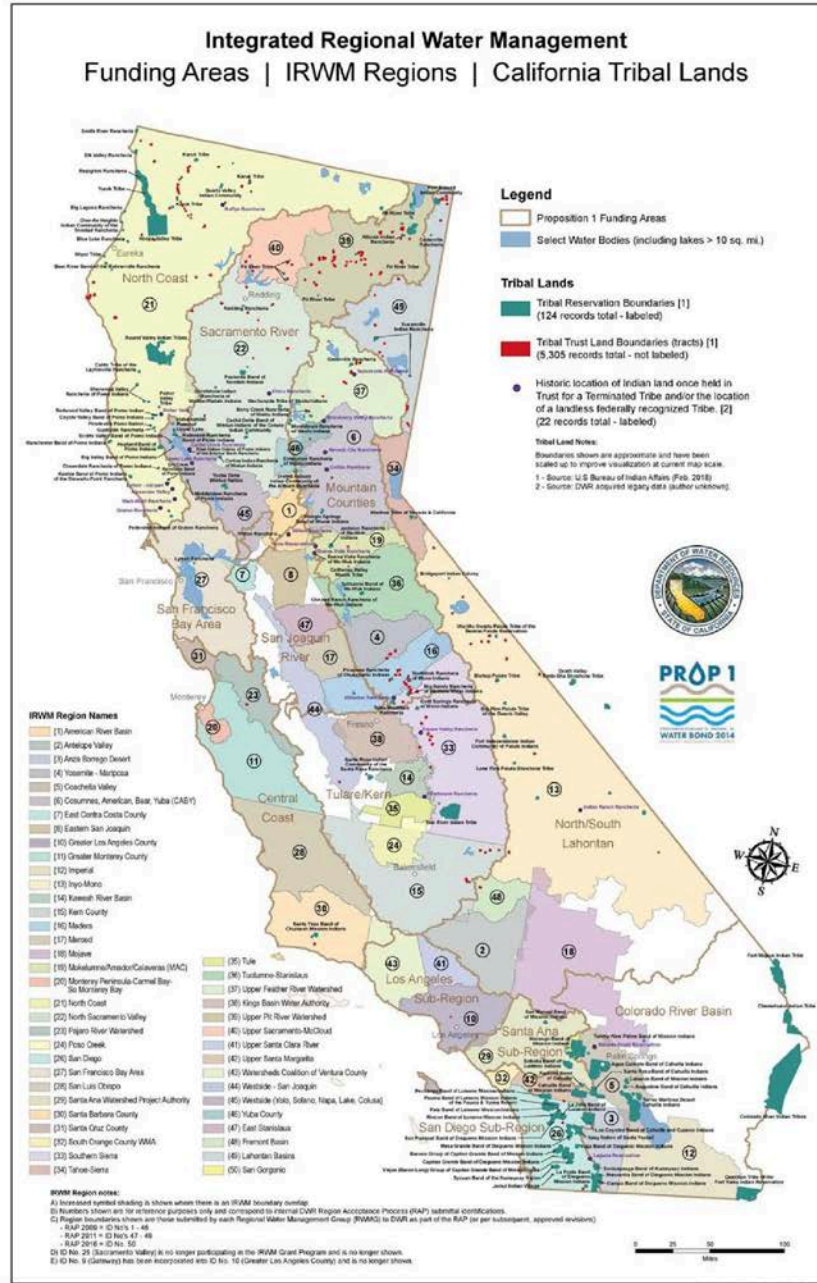
info.tribalaffairs@gov.ca.gov
(916) 319-9219
www.tribalaffairs.ca.gov/

Native American Heritage Commission

naahc@naahc.ca.gov
(916) 373-3710
www.nahc.ca.gov/

DWR Office of the Tribal Policy Advisor

Anecita.Agustinez@water.ca.gov
www.water.ca.gov/About/Tribal-Policy



Appendix B - Native American Heritage Commission Letter



STATE OF CALIFORNIA

Gavin Newsom, Governor

NATIVE AMERICAN HERITAGE COMMISSION

May 18, 2020

Ilse Lopez-Narvaez

Self-Help Enterprises

Via Email

CHAIRPERSON
Laura Miranda
Luiseno

VICE CHAIRPERSON
Reginald Pagaling
Chumash

SECRETARY
Merri Lopez-Keifer
Luiseno

PARLIAMENTARIAN
Russell Attebery
Karuk

COMMISSIONER
Marshall McKay
Wintun

COMMISSIONER
William Mungary
Paiute/White Mountain Apache

COMMISSIONER
Julie Tumamait-Stenslie
Chumash

COMMISSIONER
[Vacant]

COMMISSIONER
[Vacant]

EXECUTIVE SECRETARY
Christina Snider
Pomo

NAHC HEADQUARTERS
1550 Harbor Boulevard
Suite 100
West Sacramento,
California 95691
(916) 373-3710
nahc@nahc.ca.gov
nahc.ca.gov

Re: Self-Help Enterprises Outreach, Kern, Kings, Fresno & Tulare Counties

Dear Ms. Lopez-Narvaez:

Attached is a list of tribes that have cultural and traditional affiliation to the area of potential effect (APE) for the project referenced above. I suggest you contact all of the tribes listed, and if they cannot supply information regarding the presence of cultural resources, they may recommend others with specific knowledge. The list should provide a starting place to locate areas of potential adverse impact within the APE. By contacting all those on the list, your organization will better be able to respond to claims of failure to consult, as consultation may be required under specific state Statutes. If a response from the tribe has not been received within two weeks of notification, the Native American Heritage Commission (NAHC) requests that you follow up with a telephone call or email to ensure that the project information has been received.

The NAHC also recommends that the project proponents conduct a record search of the NAHC's Sacred Lands File (SLF) and also of the appropriate regional archaeological Information Center of the California Historic Resources Information System (CHRIS) to determine if any tribal cultural resources are located within the APE of the project.

The SLF, established under Public Resources Code sections 5094, subd. (a) and 5097.96, includes sites submitted to the NAHC by California Native American tribes. The request form to search the SLF can be found at <http://nahc.ca.gov/resources/forms>. To request a search of the CHRIS system, please contact http://php.parks.ca.gov/?page_id=1068. Please note, the records maintained by the NAHC and CHRIS are not exhaustive or conclusive. A negative response to a search does not preclude the existence of tribal cultural resources. A tribe may in fact be the only source for information about tribal cultural resources within an APE.

If you receive notification of change of addresses and phone numbers from tribes, please notify the NAHC. With your assistance, we can assure that our contact list remains current.

If you have any questions, please contact me at my email address:

Nancy.Gonzalez-Lopez@nahc.ca.gov.

Sincerely,

Nancy Gonzalez-Lopez

Cultural Resources Analyst

Attachment

Tribal Engagement Stakeholder Group
Prop 1 Integrated Regional Water Management Program
Disadvantaged Community Involvement Program
Tulare-Kern Funding Area
June 16, 2020
1:00 PM – 2:30 PM

AGENDA

Meeting Goals:

- Provide information on the IRWM, DACI, and DACEEP program
- Discuss Tribal Engagement Plan and objectives
- Identify stakeholder interest in Tribal Engagement Plan
- Identify Tribal projects that can benefit from IRWM Funding

1. **Welcome and Introductions (5 minutes)**
 - a. Purpose/Meeting Objectives
2. **IRWM and DACI Program Overview (10 minutes)**
 - a. Goals and Objectives of IRWM and DACI Program
 - c. Goals and Objectives of DACEEP
3. **Tribal Engagement Outreach Plan (1 hour)**
 - a. Purpose/Objectives
 - b. Identify best outreach and engagement practices
 - c. Identify projects that could benefit from the IRWM funding
4. **Final Comments and Next Steps (5 minutes)**

Questions for Discussion

Stakeholder Interest:

- Are there other tribal groups or anyone else we should invite to participate in future meetings of this stakeholder group?
- How often should interest-based groups be briefed by the RWMG members?

Outreach and Engagement:

- What are effective methods that would be helpful to help engage and outreach to Tribes?
 - What are some of the potential challenges when performing outreach to tribes?
 - In-person, email or calling preference?
 - Fostering relationships through meetings? Informal meetings?
- Are there capacity and technical assistance issues that Tribes encounter?
- What projects could tribes start or advance with IRWM funding?
 - Project examples from other IRWM regions
 - Hydrant replacement projects
 - Water Conservation Plans
 - Feasibility Study to look at the possibility of interconnecting the town system and the tribe system
 - Potable water pipeline
 - Water reclamation project
 - Water tanks
 - Water meters
- Would developing different types of outreach materials be effective? Has this been effective in the past?
 - How accessible are the outreach materials?
- What would you like to see IRWM regions do to better engage with Tribes?

TRIBAL ENGAGEMENT AND OUTREACH STAKEHOLDER GROUP

INTEGRATED REGIONAL WATER MANAGEMENT
DISADVANTAGED COMMUNITY INVOLVEMENT PROGRAM
DEPARTMENT OF WATER RESOURCES

Sonia Sanchez, Self-Help Enterprises
Ilse Lopez-Narvaez, Self-Help Enterprises



AGENDA

- Welcome and Introductions**
 - Purpose/Meeting Objectives
- IRWM and DACI Program Overview**
 - Goals and Objectives of IRWM and DACI Program
 - Goals and Objectives of DACEEP
- Tribal Engagement Outreach Plan**
 - Purpose/Objectives
 - Identify best outreach and engagement practices
 - Identify projects that could benefit from the IRWM funding
- Final Comments and Next Steps**

1

19 | Page

INTEGRATED REGIONAL WATER MANAGEMENT TERMS AND ACRONYMS

Term	Acronym
Integrated Regional Water Management	IRWM
Disadvantaged Community Involvement Program	DACIP
Disadvantaged Community Engagement & Education Program	DACEEP
California Department of Water Resources	DWR
Regional Water Management Group	RWMG
Disadvantaged Community	DAC
Severely Disadvantaged Community	SDAC
Community-Based Organizations	CBOs
Funding Area	FA
Tulare-Kern Funding Area	TKFA

MEETING GOALS

- Provide information on the IRWM, DACI, and DACEEP program
- Discuss Tribal Engagement Plan and objectives
- Identify stakeholder interest in Tribal Engagement Plan
- Identify Tribal projects that can benefit from IRWM Funding

WHAT IS THE INTEGRATED REGIONAL WATER MANAGEMENT (IRWM) PROGRAM?

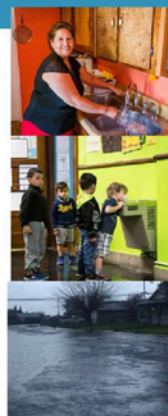
- Established 2002 – IRWM Act (SB 672)
- Voluntary, statewide **planning and implementation program**
- Incentivizes **regional collaboration** among multiple water agencies and stakeholders
- Addresses **multiple water needs** on regional scale and advance the implementation of **multi-benefit projects**

Aims to increase water supply and reliability and protection or improvements to water quality



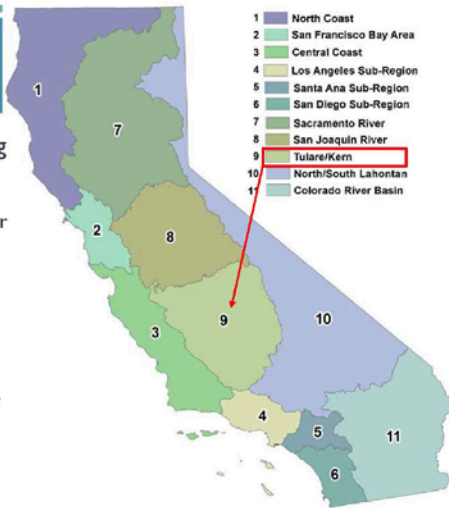
WHY IS IRWM IMPORTANT?

- Unique opportunity to come together to **manage all water needs, identify common challenges, and advance shared solutions**
- Can lead to **more effective, affordable water solutions** and more reliable water supplies
- Provides **funding opportunities** for a variety of projects
- **Communities that are proactively planning and investing in water management strategies have shown resilience**



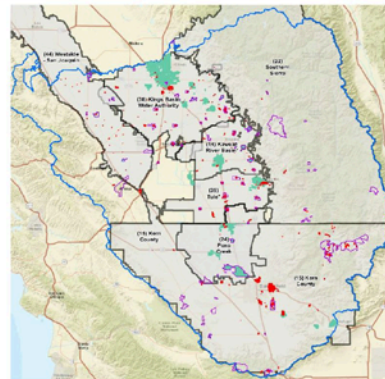
HOW IS FUNDING ALLOCATED?

- DWR distributes grant funding to 12 Funding Areas around the State
 - **Funding Area:** hydrologic region focused on coordinating a strategic approach to regional water resources management
- Each Funding Area is made up of various IRWM regions within the FA boundaries
- IRWM regions collaborate to figure out how much money will be given in each category
 - General Implementation
 - DAC Implementation (10%)



TULARE-KERN FUNDING AREA

- \$34 million awarded; split into two funding categories
 - \$26.4M available for General and DAC Implementation Projects
 - \$23M General Implementation Projects: Include all other eligible implementation projects
 - **\$3.4M DAC Implementation Projects:** 10% of funds allocated to DACs and include only those projects that directly benefit a DAC
- Seven (7) IRWMs:
 - Kaweah River Basin IRWM
 - Kern County IRWM
 - Kings Basin Water Authority
 - Poso Creek IRWM
 - Southern Sierra Regional Water Management Group
 - Tule River Basin IRWM
 - Westside-San Joaquin IRWM



DAC INVOLVEMENT PROGRAM OBJECTIVES

- Work collaboratively to involve DACs, Tribes, and stakeholders in IRWM planning efforts
- Increase understanding and identify water management needs of DACs in the Funding Area
- Develop strategies and long-term solutions to address DAC water management needs



PROJECT ADVISORY COMMITTEE

- Project Advisory Committee (PAC)* to provide key Program guidance and decision making
 - One Member selected by each IRWM (7)
 - One DAC Member selected by each IRWM region (7)
 - One Tribe Member (1)
 - Alternates for each PAC member (15)



ABOUT THE DADI PROGRAM

- Funded by Proposition I
 - 10% to DAC Implementation: \$3.4 Million for Tulare-Kern Funding Area
- Began February 2018
- Activities Include:
 - Needs Assessment
 - DAC Education & Engagement Program (DACEEP)
 - Project Development Activities and Construction
 - Project Management
 - Grant Administration



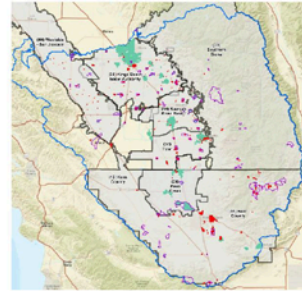
DAC ENGAGEMENT & EDUCATION PROGRAM

- Focuses on improving the understanding of community water needs and IRWM
- Encourages DAC participation and engagement in IRWM activities
- Activities include:
 - Assessment of Past and Present DAC Engagement
 - Community Water Needs Assessment
 - DAC Outreach and Engagement Recommendations
 - Develop IRWM Educational Tools
 - Project Development and Technical Assistance
 - Build long-term water management and capacity



TRIBAL ENGAGEMENT OUTREACH PLAN

- Tribal Engagement Plan for the TFKFA
- Develop outreach plan to provide awareness and education regarding IRWM and the DACI Program
- Identify best outreach and engagement practices for Tribes
- Identify projects that could benefit from the IRWM funding



13

TRIBAL ENGAGEMENT OUTREACH PLAN

- What effective methods would be helpful to help engage and outreach to Tribes?
- What are some of the potential challenges faced when performing outreach to Tribes?
- Are there capacity and technical assistance issues that Tribes encounter?
- What projects could Tribes start or advance with IRWM funding?
 - Project examples from other IRWM regions
 - Hydrant replacement projects
 - Water Conservation Plans
 - Feasibility Study to look at the possibility of interconnecting the town
- Would developing different types of outreach materials be effective? Has this been effective in the past?
- What would you like to see IRWM regions or the Funding Area do to better engage with Tribes?

NEXT STEPS

- **Develop Tribal Engagement Plan**
- **Next TKFA Project Advisory Committee Meeting**
 - Thursday, June 18, 2020
 - 9 AM – 12PM
 - Remote and in-person participation available
 - In-person will be located at the Tulare County Board of Supervisors Chambers, 2800 W. Burrell Avenue, Visalia, CA.
 - Remote participation link/call-in information will be provided three days ahead of the meeting, along with remote participation guidance.
- **Attend your regions next IRWM Meeting**



THANK YOU!

Questions or
comments?

Sonia Sanchez
Community Development Specialist
Self-Help Enterprises
SoniaS@SelfHelpEnterprises.org

Ilse Lopez-Narvaez
Community Development Specialist
Self-Help Enterprises
IlseN@SelfHelpEnterprises.org

16

Appendix F – Stakeholder Group Meeting Summary

Tulare-Kern Funding Area Disadvantaged Community Involvement Program Stakeholder Group Call – Tribal Engagement Plan

Location: Video Conference Call held via Zoom

Zoom: 976 8919 9781 / Code: 928718

Call number: (669) 900- 9128

Meeting Summary Tuesday, June 16, 2020 1:00 pm – 1:45 pm

Attendees: Manuel Leon (Self-Help Enterprises), Sonia Sanchez (Self-Help Enterprises), Ilse Lopez-Narvaez (Self-Help Enterprises), Jessi Snyder (Self-Help Enterprises) Steve Haze (Sierra River Conservation District), Charmaine McDarment (Tule River Tribe – In House Legal Counsel), Soua Lee (Kings Basin Water Authority), Kelly Leyendekker (Tule River IRWM)

Welcome and Introductions:

Sonia thanked everyone for attending. Attendees introduced themselves before reviewing the agenda for the call.

Review of the Agenda: The group reviewed the agenda. No changes were made to the agenda.

Purpose/Objective of Stakeholder Group Call – Tribal Engagement Plan:

Self-Help Enterprises (SHE) provided a brief overview of the goals of the meeting, the Integrated Regional Water Management (IRWM) Program and of the Disadvantaged Community Involvement Program (DACIP). In summary, the purpose of the stakeholder group is to develop a Tribal engagement plan to increase the participation of federally recognized and non-federally recognized Tribes in the Tulare-Kern Funding Area. To develop the plan, SHE prepared the following discussion agenda:

- Discuss with participants how to best perform outreach to Tribes
- Review discussion questions that SHE developed to create an outreach plan
- Discuss Tribal Engagement Plan and Objectives
- Identify Tribal Projects that can benefit from IRWM funding

Group Discussion:

After the overview, SHE expressed the importance of building and fostering a relationship with Tribes to address their water management needs. For the discussion portion of the meeting, SHE prepared and facilitated discussion questions among the attendees who joined the stakeholder group call. The following discussion and questions took place:

What are effective methods that would be helpful to engage and outreach to tribes?

Charmaine McDarment from the Tule River Tribe shared the following:

- Every Tribe has a different set of processes that we must go through. It would be helpful to attend the Tribal Council Meeting. Some Tribes prefer to have someone attend their meetings and to get to know them.
- In regards to meetings about water, some Tribes send their chairperson, council member, or staff members.
- SHE should contact the Tribes that they are interested in working with and ask to attend their Tribal Council Meetings to build rapport.

As a follow-up question, Ilse Lopez-Narvaez from SHE asked:

- Will we need permission to attend tribal council meetings or are these meetings open to the public? If so, what is the process for obtaining permission to attend council meetings?

In response to this question, Charmaine commented:

- SHE can contact Tribal council members to attend meetings. After SHE asks for permission, the Tribe will give a date and time to attend. Charmaine clarified that this is only for the Tule River Tribe and other Tribes may have a different process.

Steve Haze from the Sierra River Conservation District mentioned:

- Every Tribe is going to have different process. Through some of the Tribal consultations they have conducted, they have followed a similar framework that Charmaine McDarment discussed. Steve suggested taking the outreach approach one-step at a time.
- It is also important to understand the challenges Tribes are facing and figure out how we can be of service to them. Steve recommended learning the different perspectives and positions of the Tribes when engaging with them and conducting outreach.

SHE thanked Steve and Charmaine for their feedback and asked the following discussion question:

What are some of the potential challenges when performing outreach to tribes?

Sonia followed up asking if there were challenges such as internet challenges or other challenges when conducting outreach.

Charmaine shared:

- The Tule River Tribe elects new council members every year. Yearly elections can make it difficult as some council members are not re-elected and this can make it difficult to contact who is currently in charge.
- Also, there are staff members who are involved on different water efforts and that SHE can contact them to work with them, learn from them and assist them..

Ilse followed up and mentioned some of the tribal engagement issues learned in the Tribal Engagement Seminar such as staff capacity challenges. Ilse also thanked Charmaine for sharing.

Soua Lee from the Kings Basin Water Authority, mentioned that one of the things they struggle with is not knowing where to start or who to contact, however she would like to know where to begin as well.

Charmaine responded by informing that that it would be helpful to use the [Tribal Leaders Directory](#) to find a list of all the federally recognized Tribes in California and identify the tribal leader contact for the Tribe.

SHE thanked attendees for their feedback and asked the following discussion question:

Are there any capacity and technical assistance issues that tribes encounter?

Charmaine asked SHE to clarify the question.

SHE responded by saying: As a technical service provider, SHE provides different kinds of assistance to disadvantaged communities (DACs) and severely disadvantaged communities

(SDACs) SHE mentioned the different services they provide to communities and explained that SHE would like to offer these services to Tribes as a part of our new task:

- Conducting outreach
- Creating educational material
- Hosting information sessions and workshops
- Teaching DAC and SDAC residents about the IRWM process
- Teaching and assisting residents to propose IRWM projects and learn about funding opportunities

Attendees agreed that the services mentioned would be useful to Tribes.

Charmaine mentioned that they would like SHE to share any materials that are available. Charmaine also proposed hosting webinars as a tool. SHE mentioned that once the second round of funding is available, they could work on this.

SHE agreed to share any current and future relevant materials once the Tribal outreach engagement plan was finished. Following this discussion on materials, SHE asked the following question:

What projects could tribes start or advance with IRWM funding?

Charmaine mentioned some of the issues that the Tule River Tribe currently faces:

- Water storage issues
- Water capturing issues
- Families losing water access near the end of the summer
- The currently delivery system is outdated and old

Steve Haze mentioned that tribes could benefit from IRWM funding to look into wastewater treatment systems for communities and private water systems.

Following the questions for discussion, the group agreed that communication is very important. The group mentioned that some Tribes have not conducted meetings because of COVID-19. Only recently have some Tribes begun to hold online meetings. Charmaine mentioned that SHE should continue to contact tribes via email and to be consistent. The group discussion then concludes.

Future Agenda Topics/Action Items/Adjourn:

Sonia informed that SHE would prepare a summary of the meeting to distribute to all attendees as well as those who expressed interest, but were unable to attend the meeting. Additionally, Sonia announced the date and time of the Project Advisory Committee Meeting with the attendees. Sonia explained that the meeting could be attended in person or virtually.

Soua asked a follow question:

- Is the tribal outreach engagement plan just for SHE purposes or for others as well?

Sonia responded by stating that:

- This plan will be helpful to SHE and to IRWM groups as well in their Tribal outreach and engagement efforts.
- SHE will be developing a specific outreach and engagement plan as well as other educational materials for tribes.
- Organizations other than SHE will receive the plan too.

Sonia informed the group that draft outreach plan would be made. Sonia also mentioned that the Stakeholder Group would have the chance to review and suggest comments on the plan.

SHE thanked everyone in attendance for their time.

Appendix G – Stakeholder Group Meeting #2 Agenda (prepared by SHE)

Tribal Engagement Stakeholder Group Meeting #2

Prop 1 Integrated Regional Water Management Program
Disadvantaged Community Involvement Program
Tulare-Kern Funding Area
July 14, 2020
10:00 AM – 11:00 AM

AGENDA

Meeting Goals:

- Provide brief overview of the DACIP and DACEEP
- Discuss Tribal Engagement Plan and objectives
- Provide feedback on Tribal Engagement Plan

1. Welcome and Introductions

- a. Purpose/Meeting Objectives

2. IRWM and DACI Program Overview

- a. Goals and Objectives of the DACI Program and DACEEP

3. Tribal Engagement Outreach Plan

- a. Purpose/Objective
- b. Tribes
- c. Sources
- d. Challenges
- e. Recommendations
- f. Outreach and Engagement Strategies

4. Final Comments and Next Steps

Questions for Discussion

Section 1:

- Is the purpose and goal of the plan clear?
- Does the Purpose and goal encompass the needs of your Tribe

Section 2:

- Are there any Tribes we might have missed?
- What would you like to see included or removed from this section? Is there anything missing?

Section 3:

- Are there any Tribes we might have missed?
- What would you like to see included or removed from this section? Is there anything missing?

Section 4:

- Do the current challenges encompass the challenges faced by your Tribe?
- Are there other challenges that need to included? Any that should be removed?

Section 5:

- Do the current recommendation align with what your Tribes are requesting?
- Are there other recommendations that need to included? Are there any that should be removed?

Section 6:

- Are there any additional strategies you would like to see implemented?

Section 7:

- Any questions on the documents?

Appendix I – Stakeholder Group Meeting #2 PowerPoint (prepared by SHE)

INTEGRATED REGIONAL WATER MANAGEMENT TERMS AND ACRONYMS

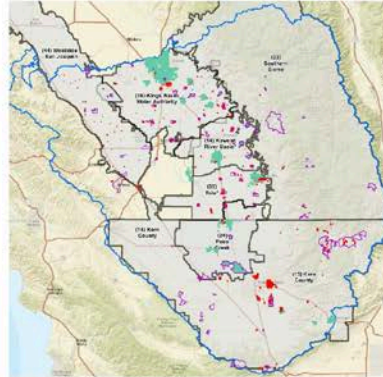
Term	Acronym
Integrated Regional Water Management	IRWM
Disadvantaged Community Involvement Program	DACIP
Disadvantaged Community Engagement & Education Program	DACEEP
California Department of Water Resources	DWR
Regional Water Management Group	RWMG
Disadvantaged Community	DAC
Severely Disadvantaged Community	SDAC
Community-Based Organizations	CBOs
Funding Area	FA
Tulare-Kern Funding Area	TKFA

MEETING GOALS

- Provide brief overview of the DACIP and DACEEP
- Discuss Tribal Engagement Plan and Objectives
- Provide feedback on Tribal Engagement Plan

TULARE-KERN FUNDING AREA

- \$34 million awarded; split into two funding categories
 - \$26.4M available for General and DAC Implementation Projects
 - \$23M General Implementation Projects: Include all other eligible implementation projects
 - \$3.4M DAC Implementation Projects: 10% of funds allocated to DACs and include only those projects that directly benefit a DAC
- Seven (7) IRWMs:
 - Kaweah River Basin IRWM
 - Kern County IRWM
 - Kings Basin Water Authority
 - Poso Creek IRWM
 - Southern Sierra Regional Water Management Group
 - Tule River Basin IRWM
 - Westside-San Joaquin IRWM



DAC INVOLVEMENT PROGRAM OBJECTIVES

- Work collaboratively to involve DACs, Tribes, and stakeholders in IRWM planning efforts
- Increase understanding and identify water management needs of DACs in the Funding Area
- Develop strategies and long-term solutions to address DAC water management needs



ABOUT THE DADI PROGRAM

- Funded by Proposition 1
 - 10% to DAC Implementation: \$3.4 Million for Tulare-Kern Funding Area
- Began February 2018
- Activities Include:
 - Needs Assessment
 - DAC Education & Engagement Program (DACEEP)
 - Project Development Activities and Construction
 - Project Management
 - Grant Administration



7

DAC ENGAGEMENT & EDUCATION PROGRAM

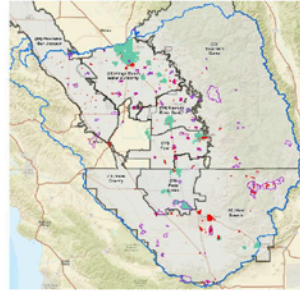
- Focuses on improving the understanding of community water needs and IRWM
- Encourages DAC participation and engagement in IRWM activities
- Activities include:
 - Assessment of Past and Present DAC Engagement
 - Community Water Needs Assessment
 - DAC Outreach and Engagement Recommendations
 - Develop IRWM Educational Tools
 - Project Development and Technical Assistance
 - Build long-term water management and capacity



8

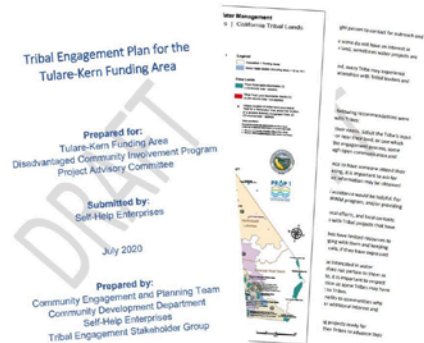
TRIBAL ENGAGEMENT OUTREACH PLAN

- Tribal Engagement Plan for the TFKFA
- Develop outreach plan to provide awareness and education regarding IRWM and the DACI Program
- Identify best outreach and engagement practices for Tribes



TRIBAL ENGAGEMENT OUTREACH PLAN

1. Purpose/Objective
2. Tribes
3. Sources
4. Challenges
5. Recommendations
6. Outreach and Engagement Strategies
7. Appendices



SECTION 1 - BACKGROUND/OBJECTIVES

- Purpose and goal of the Tribal Engagement Plan
- IRWM Grant Background
- Tulare-Kern Funding Area
- Discussion Questions
 - Is the purpose and goal of the plan clear?
 - Does the Purpose and goal encompass the needs of your Tribe?

1. Background and Objectives
 Out of respect for Tribal sovereignty, and recognizing the sacred relationship that First Peoples have to water, we want to recognize the beneficial uses of water and cultural practices of Tribes and recognize that Tribes are sovereign nations. We thank everyone for their time and efforts in formulating this Plan to include the needs, values and perspectives of Tribes in regional water management in the Tulare-Kern Basin.

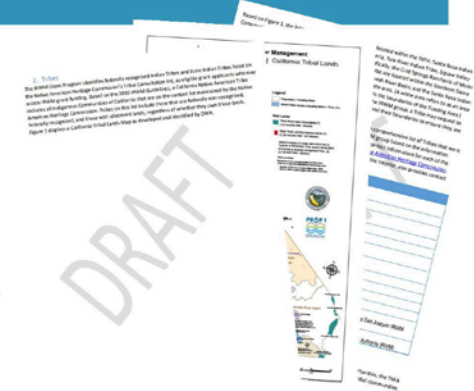
The purpose of the Tribal Engagement Plan for the Tulare-Kern Funding Area (TKFA) is to provide awareness and education to Tribes regarding the Integrated Regional Water Management (IRWM) Program and the Disadvantaged Community Involvement Program (DCIP). Goals of the plan include identifying the best outreach and engagement practices for Tribes and identifying and prioritizing projects with Tribes that could benefit from IRWM Funding. Additionally, the development of the Tribal Engagement Plan helps ensure that the challenges and proposed solutions for the Integrated Regional Water Management Program (IRWMP) and the TKFA are met and that meaningful engagement and outreach with Tribes occurs within the funding area and individual IRWM regions.

1.1 Grant Background
 On November 4, 2014, California voters approved Proposition 1, High-Speed Quality Supply and Infrastructure Improvement Act, Proposition 1 authorized \$1.5 billion in state grant funding to create funding areas, allocating 60% (\$900M) of the funds to "senior" (disadvantaged) communities, economically disadvantaged areas (EDAs), or senior/disadvantaged communities within regions" and not less than 10% (\$150M) for "eligible projects that directly benefit disadvantaged communities." The Department of Water Resources (DWR) subsequently established the DACIP and awarded nearly \$25 million in the Tulare-Kern Funding Area to California. The objectives of the IRWMP Program (IRWMP) is to improve the effectiveness of disadvantaged communities, farms, and underserved communities (e.g., Tribes) in IRWM planning efforts in the disadvantaged regions in the Tulare-Kern Basin and to support the needs of these communities in needs assessment reports, and to develop strategies for addressing the needs (including projects that could be eligible for Proposition 1 state grant funding funding).

The Tulare-Kern Funding Area Disadvantaged Community Involvement Program (TKFA DCIP) is a \$1.8 million grant funded effort, which aims to develop strategies to address long-term, sustainable water planning needs, and improve the participation and engagement of disadvantaged communities (DAC) and senior/disadvantaged communities (SDC) in IRWM within the funding area. Specifically, \$10,000 of the available \$1.8 million has been set aside to fund a Tribal Engagement Community Engagement and Education Program (TCEEP). The TCEEP focuses on improving the understanding of community water needs and the IRWM process as well as encouraging DAC/SDC participation and engagement in IRWM activities.

SECTION 2 - TRIBES

- How Tribes are identified in the IRWM program
- Tribes identified with the TKFA
- How to obtain contact information for Tribes
- Discussion Questions
 - Are there any Tribes we might have missed?
 - What would you like to see included or removed from this section? Is there anything missing?



- Recommendations for outreach and engagement with Tribes

- Discussion Questions

- Do the current recommendations align with what your Tribes are requesting?
- Are there other recommendations that need to be included? Are there any that should be removed?

Figure 1. **Figure 1** illustrates the research design, and identifies the data sources and the analysis steps. The research design is a cross-sectional study. The data sources are the National Longitudinal Survey of the Youth (NLSY) and the National Longitudinal Survey of the Adult Population (NLSAP). The analysis steps are: (1) Data collection, (2) Data cleaning, (3) Data analysis, and (4) Data interpretation. The NLSY and NLSAP are the two main data sources. The NLSY is a longitudinal survey of the youth population, and the NLSAP is a longitudinal survey of the adult population. The data collection step involves the collection of data from the NLSY and NLSAP. The data cleaning step involves the removal of missing data and the identification of outliers. The data analysis step involves the use of statistical methods to analyze the data. The data interpretation step involves the interpretation of the results of the analysis.

- Identified outreach and engagement strategies for upcoming tasks

- Discussion Questions

- Are there any additional strategies you would like to see implemented?

- **Interventions:** often identified categories of projects for which it may be helpful for TNCs to invest money, invest resources
- **Investment opportunities and requirements**
 - **Exchange benefits** to strengthen corporate capabilities and improve the overall performance of domestic sector
 - **Domestic supply** such as resource requirements, technology and inputs

4. Outreach and Engagement strategies

The TNCs identified the need to expand outreach and engagement efforts with different groups in Thailand, including the private sector, government, academia, and civil society. The TNCs and government officials identified the following areas for TNC and government efforts:

- **Education:** TNCs should support the development of the Thai workforce, including the development of technical skills, and support the development of the Thai workforce, including the development of technical skills, and support the development of the Thai workforce, including the development of technical skills.
- **Environment:** TNCs should support the development of the Thai environment, including the development of technical skills, and support the development of the Thai environment, including the development of technical skills, and support the development of the Thai environment, including the development of technical skills.
- **Health:** TNCs should support the development of the Thai health sector, including the development of technical skills, and support the development of the Thai health sector, including the development of technical skills, and support the development of the Thai health sector, including the development of technical skills.
- **Community:** TNCs should support the development of the Thai community, including the development of technical skills, and support the development of the Thai community, including the development of technical skills, and support the development of the Thai community, including the development of technical skills.
- **Government:** TNCs should support the development of the Thai government, including the development of technical skills, and support the development of the Thai government, including the development of technical skills, and support the development of the Thai government, including the development of technical skills.
- **Academia:** TNCs should support the development of the Thai academia, including the development of technical skills, and support the development of the Thai academia, including the development of technical skills, and support the development of the Thai academia, including the development of technical skills.
- **Civil society:** TNCs should support the development of the Thai civil society, including the development of technical skills, and support the development of the Thai civil society, including the development of technical skills, and support the development of the Thai civil society, including the development of technical skills.

These findings are based on a preliminary analysis of the survey data, and will be refined through further analysis and validation. The findings are intended to provide a general overview of the TNC and government efforts in Thailand, and are not intended to be used for specific policy recommendations.

SECTION 7 – APPENDICES

- Additional supporting documents
- Discussion Question
 - Any questions on the documents?



NEXT STEPS

- **Finalize Tribal Engagement Plan**
- **Next TKFA Project Advisory Committee Meeting**
 - Thursday, September 17, 2020
 - 9 AM – 12 PM
 - Remote and in-person participation available
 - Remote and/or in-person participation will be provided as the meeting approaches, as well as agenda and other meeting materials.
- **Attend your regions next IRWM Meeting**



THANK YOU!

Questions or
comments?

Sonia Sanchez
Community Development Specialist
Self-Help Enterprises
SoniaS@SelfHelpEnterprises.org

19

Appendix J – Stakeholder Group Meeting #2 Meeting Summary

Tulare-Kern Funding Area Disadvantaged Community Involvement Program Stakeholder Group Call #2 – Tribal Engagement Plan

Location: Video Conference Call held Via Zoom

Zoom: 959 1436 2259 / Code: 530720

Call Number: (669) 900-9128

Meeting Summary Tuesday, July 14, 2020 10:00 am – 11:00 am

Attendees: Sonia Sanchez (Self-Help Enterprises – Senior Community Development Specialist), Manuel Leon Jr. (Self-Help Enterprises – Community Development Specialist), Dirk Charley (Dunlop Band of Mono Indians – Tribal Liaison), Soua Lee (Kings Basin Water Authority IRWM – Program Manager), Charmaine McDarment (Tule River Tribe – General Counsel), Xochitl Ramos (Tule River Tribe – Chief Financial Officer), Rebecca Berg (County of Tulare - Civic Sparks Intern), Barbara Cross (Department of Water Resources - Office of Tribal Policy), Kelly Kucharski (Sierra Resource Conservation District – District and Programs Administration), Anecita Agustinez (Department of Water Resources - Tribal Policy Advisor), Steve Haze (Sierra Resource Conservation District – District Manager), Denise England (County of Tulare – Water Resources Program Director)

Welcome and Introductions:

Sonia thanked everyone for attending before beginning the presentation. Attendees introduced themselves before reviewing the agenda for the call.

Review of the Agenda:

The group reviewed the agenda. No changes were made to the agenda.

Purpose/Objective of Stakeholder Group Call #2 – Tribal Engagement Plan:

Self-Help Enterprises (SHE) provided a brief overview of the goals of the meeting, the Disadvantaged Community Involvement Program (DACIP) and Disadvantaged Community Engagement & Education Program (DACEEP). In summary, the purpose of the meeting was to obtain feedback on the draft of the Tribal Engagement Plan that was developed by Self-Help Enterprises. To obtain feedback, SHE prepared discussion questions for each of the following sections of the Plan:

- Purpose/Objective
- Tribes
- Sources
- Challenges
- Recommendations
- Outreach and Engagement Strategies
- Appendices

Tribal Engagement Outreach Plan - Group Discussion

To review the sections of the plan, SHE prepared and facilitated discussion questions to obtain feedback from the stakeholder group. The following discussion took place:

Section 1 - Purpose/Objective

1. Is the purpose and goal of the plan clear?

Steve Haze began the discussion by stating that it was a good plan overall and includes good recommendations to support engagement with Tribal entities.

Dirk Charley agreed with Steve. Dirk mentioned that the Sierra Resource Conservation District will be updating their five-year plan soon and that the Tribal Engagement Plan will be useful for the plan update.

2. Does the purpose and goal encompass the needs of your Tribe?

Charmaine McDarment stated that the plan encompasses the needs of the Tule River Tribe.

Section 2 - Tribes

1. Are there any Tribes we might have missed?

Steve asked to confirm if the North Fork Rancheria is considered a White Area; as the Madera IRWM and Southern Sierra IRWM overlay the North Fork Mono Rancheria and collaborate on an MOU.

Sonia responded by informing that SHE's research showed that the Tribe is not part of an IRWM group and have not requested to be a part of an IRWM group, but SHE will look further into this. Sonia also mentioned that the North Fork Mono Rancheria can request to become a part of a group if they desire.

Steve shared that the North Fork Rancheria is a federally recognized Tribe and would belong to the Madera IRWM region.

Sonia responded by stating that SHE will clarify and investigate which group they belong to. SHE's next steps will be to:

- Research if and which IRWM group the North Fork Rancheria is a part of.
- Confirm if the North Fork Tribe is the North Fork Rancheria, which should be in Southern Sierra IRWM group, if it is the North Fork Mono Tribe. Steve informed to reach out to Tribal Chairman Ron Goode, if needed.

Dirk informed SHE that the map on page 4 of the draft plan excludes the Dunlop Band of Mono Indians and that they should be represented on the map - south of the Kings River and east of Squaw Valley. Dirk asked whom he could work with to add the Tribe on the map.

Sonia responded by stating that she can share contacts at the Department of Water Resources (DWR) to see if they can assist him. The contacts included Theodore Daum, Craig Cross, and Maria Lorenzo-Lee.

Anecita Agustinez responded by saying that the contacts Sonia mentioned are correct, but that the DWR uses the Tribes listed on the California Native American Heritage Commission (NAHC) list to develop the map as it is considered a "vetted Tribes list". Anecita recommended that Dirk share his request with Christina Snyder and the secretary of the NAHC.

Dirk informed that they need help being listed by NAHC and should be included as a - federally recognized Tribe. He shared it has been difficult working with NAHC as the process is very slow and that there is a gap in including Tribes.

Anecita stated that she is happy to help Dirk any way she can to work with NAHC and help get the Tribe recognized on the map.

2. What would you like to see included in or removed from this section? Is there anything missing?

Anecita responded to this question by asking that SHE change the language of the document in Section 2. Anecita suggested that SHE remove the language "State Indian Tribe" and replace it with "California Native American Tribes". The group also agreed that a footnote could be considered below the map to include the Dunlop Band of Mono Indians.

Section 3 - Sources

Sonia reviewed the resources that were used to create the engagement, which are detailed in the plan.

1. Are there any Tribes we might have missed?

No responses were given and Sonia stated that no responses indicate nothing was missed.

2. What would you like to see included or removed from this section? Is there anything missing?

Charmaine stated that the Strathmore Rancheria is no longer Tribal land. The land had been sold and is privately owned.

Sonia acknowledged Charmaine's comment and that SHE will remove the Strathmore Rancheria from the document.

Section 4 - Challenges

Sonia reviewed the challenges Tribes faced that were identified and included in the plan based on the information and discussions from the Stakeholder group and webinars SHE participated in.

1. Do the current challenges encompass the challenges faced by your Tribe?

There were no responses to this question. The group moved on to the next question.

2. Are there other challenges that need to be included? Any that should be removed?

Dirk shared that some land was converted, but that they are still Tribal land. Dirk also mentioned that in connection with the Sierra Resource Conservation District the Dunlop Band of Mono Indians was able to get on a well testing project. Dirk mentioned that when we think about well testing, water flow, and volume, Tribes have to find out if they have enough water to run these kinds of projects.

Anecita mentioned that the term "Tribal Allotment" should not be used and should be changed to Tribal Land. There is a clear distinction between the types of land. There is ancestral land and fee lands. Anecita will share an informational document with definitions and information on this topic.

Sonia informed that the update to the language will be made.

Anecita also informed that all Tribes have land and should not include a blanket statement like "Some Tribes do not have land." as it is not accurate.

Sonia informed that updates to the language of the plan will be made.

Section 5 – Recommendations

Sonia reviewed the recommendations outlined in the plan and mentioned that SHE is in charge of creating education materials, PowerPoints, flyers, brochures, workshops, and continuing communication with Tribes. SHE learned that some Tribes would like to continue contact despite being busy. Other recommendations that SHE learned was to respect a Tribes decision and to fund more DAC and SDAC projects

1. Do the current recommendations align with what your tribes are requesting?

There were no responses to this question. The group moved on to the next question.

2. Are there other recommendations that need to be included? Are there any that should be removed?

Dirk recommended that SHE call Tribes and ask how they are currently engaging and

holding meetings due to COVID-19. He mentioned that SHE may need to engage remotely, but should inquire what method is best to communicate (calls, Zoom meeting) and call ahead of time to get on a Tribal meeting agenda as well as prepare a package ahead of time with the information that will be shared or presented. Additionally, Dirk recommended that, when possible, SHE staff visit the Tribal reservation or Rancheria and learn about the community, watersheds, and the challenges the Tribe faces when they do not have water.

Sonia stated that this was a helpful recommendation.

Section 6 – Outreach and Engagement Strategies

Sonia reviewed the outreach and engagement strategies outlined in the draft plan.

1. Are there any additional strategies you would like to see implemented?

Dirk advised SHE reach out to the Sierra National Forest Service and the Sequoia National Forest Service as the U.S. Forest Service meetings are done in coordination with the Tribes. Dirk said that it would be a good idea to cross-market to these different organizations and recommended that SHE contact the Forest Tribal Relations staff member and ask for time on the agenda and share presentation/handouts. Dirk informed SHE that William McNeill is the Heritage Program Manager at Sequoia National Forest and their next meeting takes place in August or September. He also stated that Jeff Irwin is the contact for the Sierra Forest Service.

Sonia stated that this was a very helpful recommendation and informed that SHE staff will reach out to both contacts and request to be added to the meeting agenda.

Section 7 - Appendices

1. Any questions on the documents?

There were not questions on the documents. The group moved on to the next section of the agenda.

Next Steps/Action Items/Adjourn:

Sonia invited everyone in attendance to the next Tulare-Kern Funding Area Project Advisory

Committee meeting on September 17, 2020.


Steve commented and requested that Anecita also hold a session or continue communication to better or further understand ongoing support on these types of Tribal efforts as well as resources available and opportunities that they may not be aware are available.

Anecita informed that DWR has a tribal liaison in local offices, but the Fresno position is currently vacant and DWR currently has a freeze on hiring. Anecita would be happy to look at how DWR can support and will provide information on opportunities available, including Prop 68.

Steve followed up and asked if Sonia could assist with providing funding opportunity information.

Sonia informed that information and funding opportunities will be shared, as they are available.

Sonia thanked everyone in attendance for their time and their recommendations. Sonia informed that the final plan will be shared with everyone once available.



SAVE THE DATES

California Department of Water Resources
Office of Tribal Policy and Division of Regional Assistance
invite you to attend

Tribal Regional Water Management Webinar

a three-part series

May 19, 2020
May 26, 2020
June 2, 2020

9:00am - 12:00pm

This three-part webinar will discuss:

- IRWM Project funding and technical assistance opportunities for Tribes
- Improving and strengthening regional water funding coordination
- Identifying regional needs and reviewing needs assessment
- Effective Tribal guidance of Integrated Regional Water Management

Who should participate:


- Tribal leaders, Tribal water managers, program and grant management staff
- Regional water managers who wish to improve Tribal engagement
- Disadvantaged Communities Involvement Program regional implementation teams

Register at the link below to receive streaming and telephone access to the webinar

Part 1 – Webinar May 19, 2020

For more information or if you have trouble registering, contact:

Anecita Agustinez, Tribal Policy Advisor
916.216.8637
TribalPolicyAdvisor@water.ca.gov



RSVP and register online: <https://attendee.gotowebinar.com/register/578622798757918223>

Appendix L - Online Environmental Engagement – Building Our Skills Together Materials

Online Environmental Engagement – Building Our Skills Together Conference Materials Available:

<https://resources.ca.gov/Newsroom/Page-Content/News-List/Online-Environmental-Engagement>



Secretary Jared Blumenfeld, California Environmental Protection Agency, and **Secretary Wade Crowfoot**, California Natural Resources Agency, invite you to a series of online sessions on community engagement and equity during the COVID-19 crisis.

WHO SHOULD ATTEND?

Anyone who would like to learn more about:

- Using digital engagement tools to plan and participate in online meetings
- How organizations are adapting engagement practices during the COVID-19 crisis
- What it all means for equity and environmental justice

HOW DO I PARTICIPATE?

Register at this link: <https://bit.ly/calengage2020>. All sessions are free and online.

For more information or to request a reasonable accommodation, contact Sarah Rubin at Sarah.Rubin@conservation.ca.gov or call her at **916.214.5731**.

Spanish and other language interpretation available.

